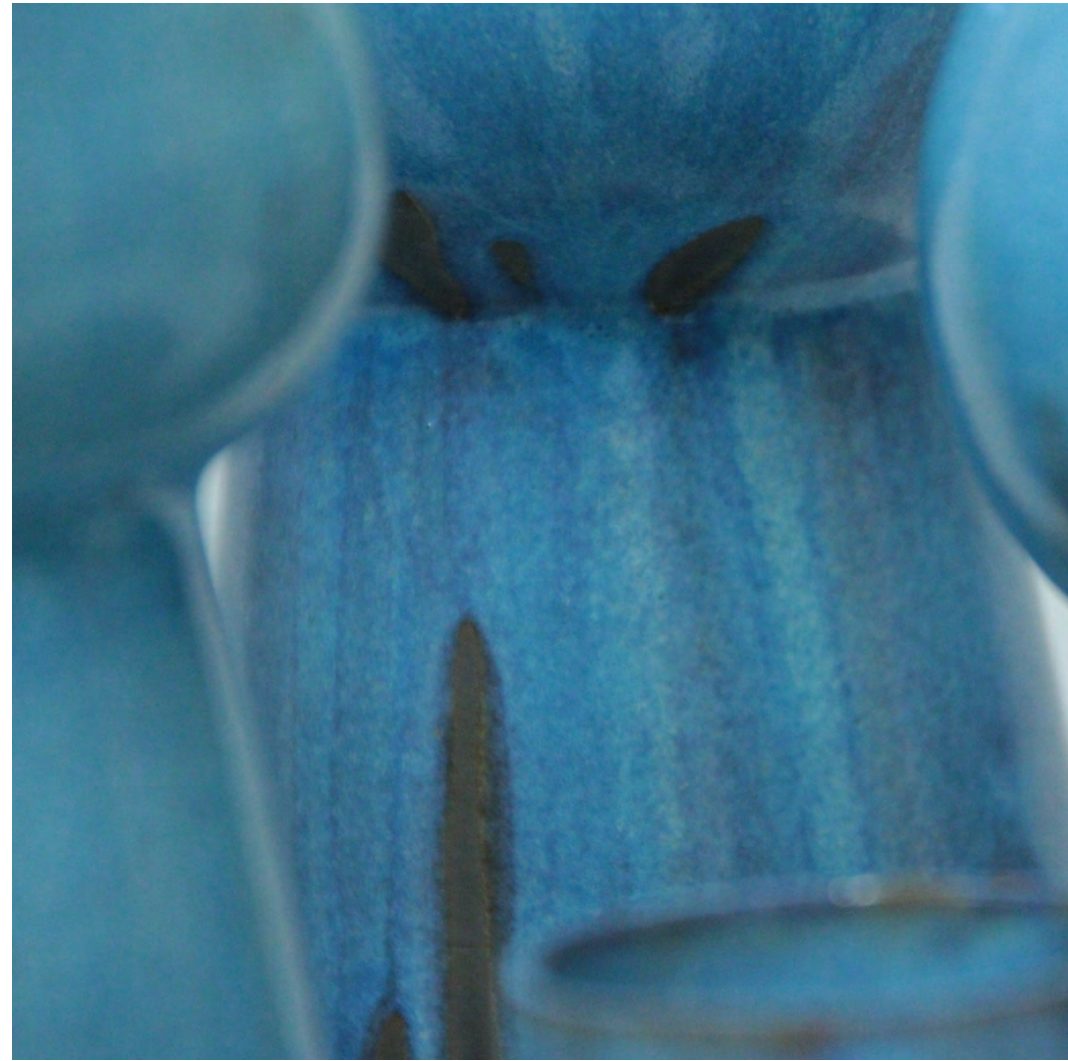


BLACK/BLUE



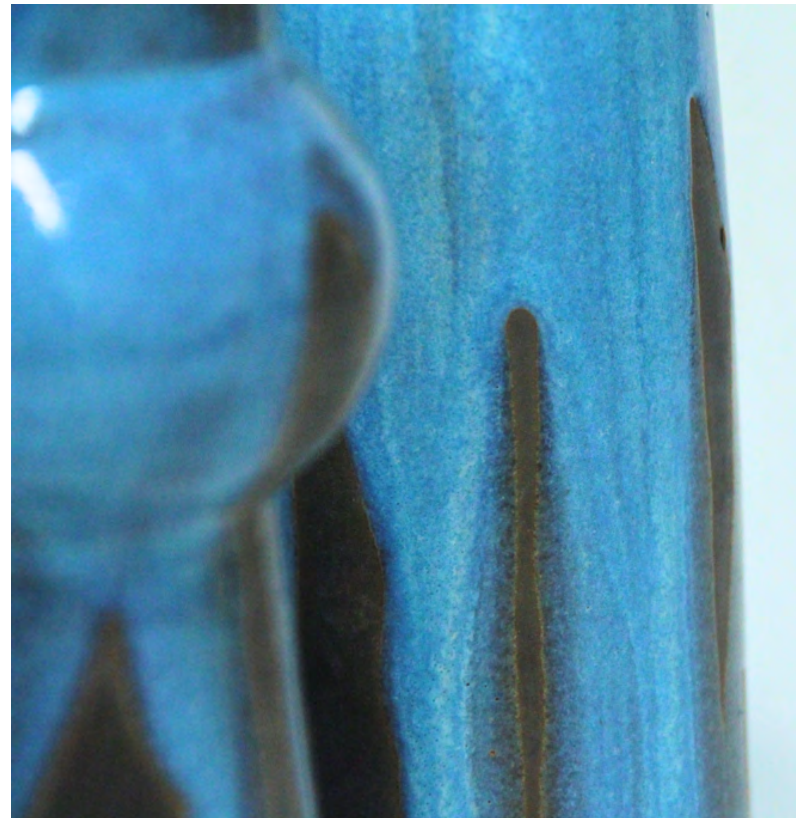
WINTER '23





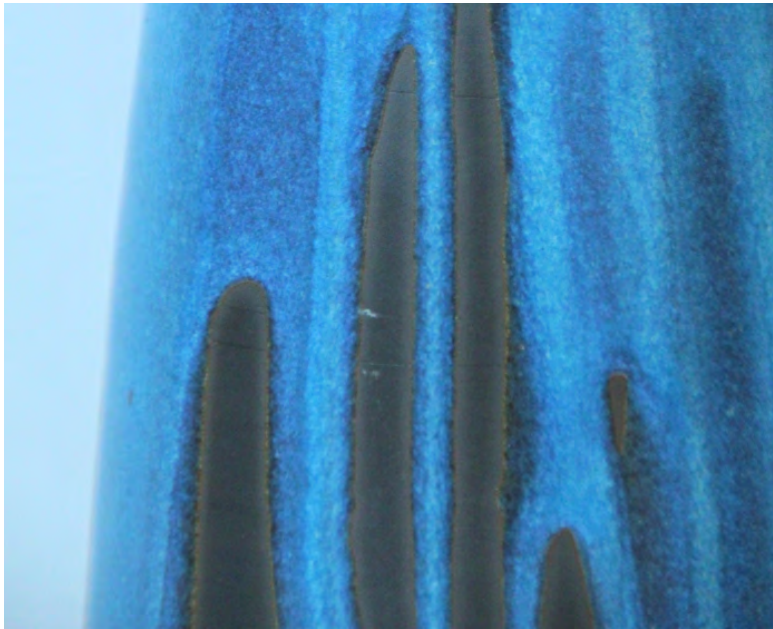
SCHUTT & ASCHE

KERAMIK





BLACK/BLUE 1



H: 29,5CM D: 11,8CM



BLACK/BLUE 2



H: 25CM D: 9CM



BLACK/BLUE 3

H: 26CM D: 8,6CM









BLACK/BLUE 4



H:17,5CM D: 7,4CM

BLACK/BLUE 5

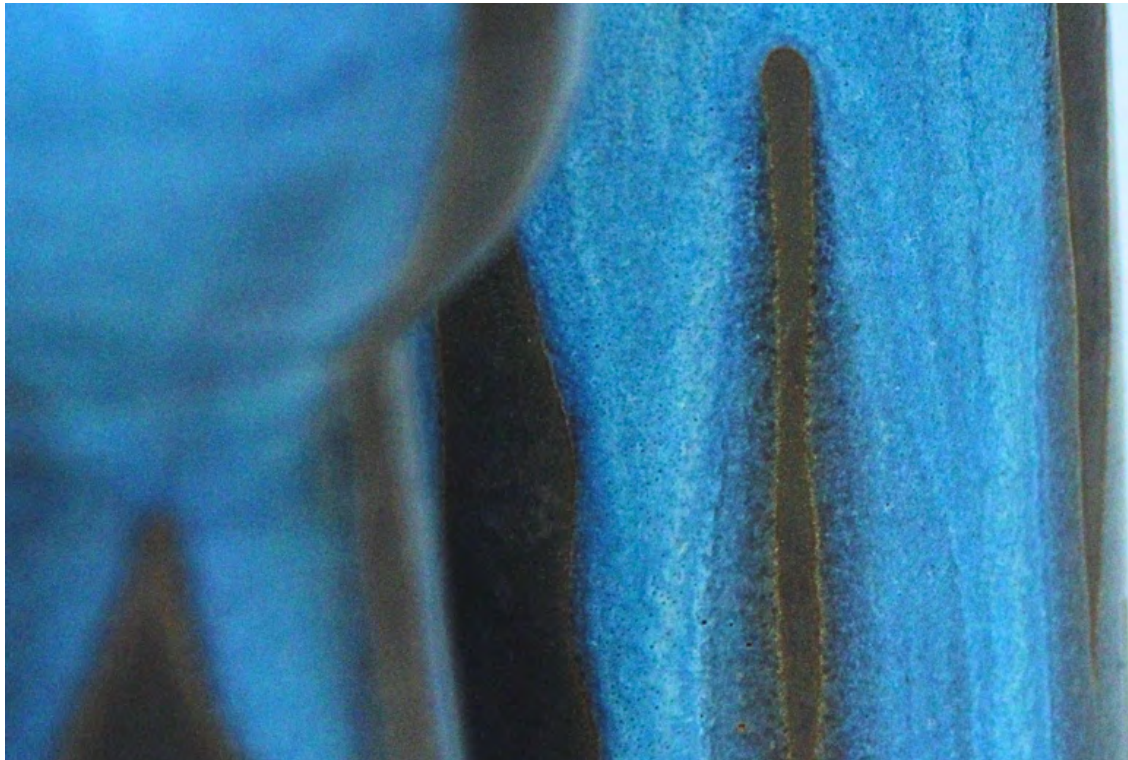


H: 27CM D: 8,2CM



SO I GATHERED
FISTFULS
OF ASH, DARK AS INK,
HAMMERED THEM
INTO MARROW,
INTO
A SKULL THICK
ENOUGH TO KEEP
THE GENTLE CURSE
OF DREAMS.

-Essay on Craft, Ocean Vuong-





Upcoming Exhibition:
INTO THE BLUE
1000vases
Corso Como, 10
Milano
@Fondazione Sozzani
16.-23.04.23

(c) Teresa Rieger
Schutt & Asche Keramik
Osterdeich 108A
28205 Bremen
mail@schuttundaschekeramik.com
03/2023